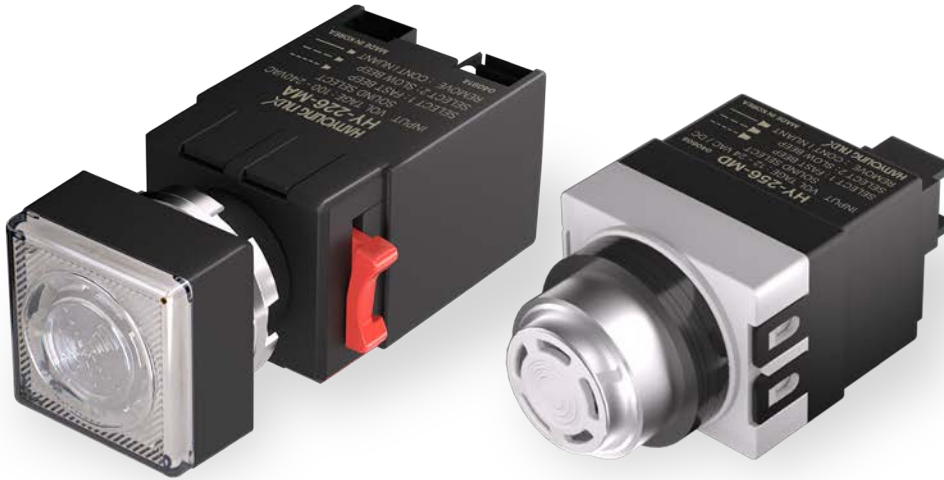




Please scan the QR code to view details.



# HY-226M/256M

Three-tone electronic buzzer with a front LED that lights up during buzzer action.

## h Suffix code

Category	Code	Description
HY-	□ □	3-Tone electronic buzzer
Appearance	226	Ø22/Ø25 compatible (rectangular front)
	256	For Ø25 installation (circular front)
Power voltage	MD	12 - 24 V d.c.
	MA	100 - 240 V a.c.

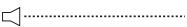
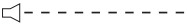

## h Specifications

Category	HY-226MD	HY-226MA	HY-256MD	HY-256MA
Installation outer diameter	Ø22/Ø25 compatible		Ø25	
Power voltage	12 - 24 V d.c.	100 - 240 V a.c. 50/60 Hz	12 - 24 V d.c.	100 - 240 V a.c. 50/60 Hz
Power consumption	0.6 W	13.5 W	0.6 W	13.5 W
Power frequency	50/60 Hz			50/60 Hz
Volume (at 1 m distance)	80 dB			

## h Type

Appearance	Power voltage	Model
Ø22/Ø25 compatible (rectangular front)	12 - 24 V d.c.	HY-226MD
	100 - 240 V a.c.	HY-226MA
For Ø25 installation (circular front)	12 - 24 V d.c.	HY-256MD
	100 - 240 V a.c.	HY-256MA

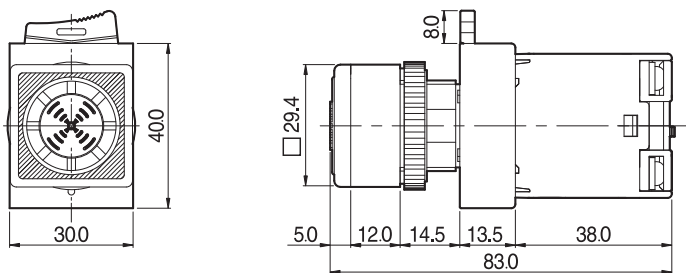
## h Tone selection

Tone selection	Tone symbols	Description
SELECT-1		Quick interrupted tone
SELECT-2		Slow interrupted tone
Open (REMOVE)		Continuous tone

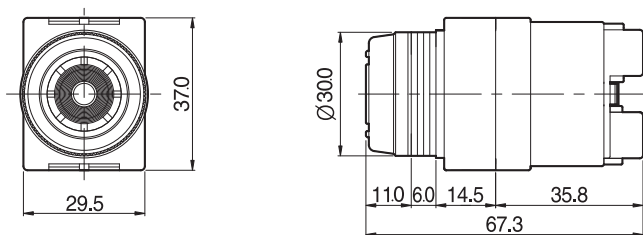
## h External dimensions

[Unit: mm]

### ■ HY-226M

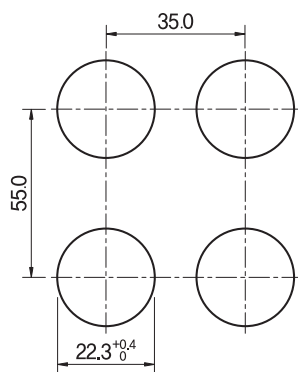


### ■ HY-256M



## h Panel cutout dimensions

### ■ HY-226M



### ■ HY-256M

