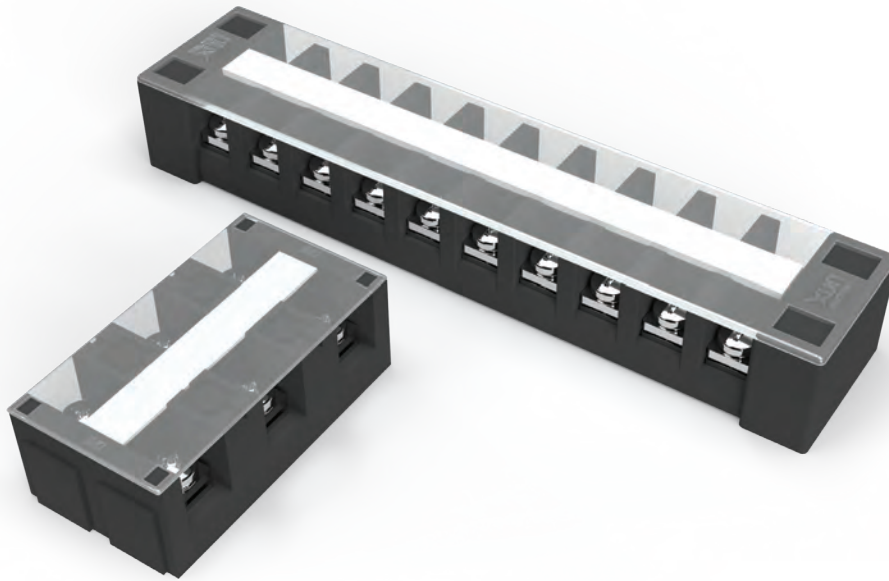




Please scan the QR code to view details.



HYT series

Fixed terminal blocks with excellent electrical and mechanical properties due to heat and anti-corrosion treatment of the main material and bolts

h Suffix code

| Category | Code | | Description |
|---------------------|--------------------------|--------------------------|--|
| HYT- | <input type="checkbox"/> | <input type="checkbox"/> | Fixed terminal block |
| Rated current | 10 | | 10 A |
| | 20 | | 20 A |
| | 30 | | 30 A |
| | 60 | | 40 A |
| | 100 | | 100 A |
| | 150 | | 150 A |
| | 200 | | 200 A |
| | 300 | | 300 A |
| | 400 | | 400 A |
| Number of poles (P) | 500 | | 500 A |
| | 3 | | 20 A, 30 A, 60 A, 100 A, 150 A, 200 A, 300 A, 400 A, 500 A |
| | 4 | | 20 A, 30 A, 60 A, 100 A, 150 A, 200 A, 300 A, 400 A, 500 A |
| | 6 | | 20 A, 30 A |
| | 10 | | 10 A, 20 A, 30 A |
| | 12 | | 20 A |
| | 15 | | 20 A |
| 20 | | 20 A | |

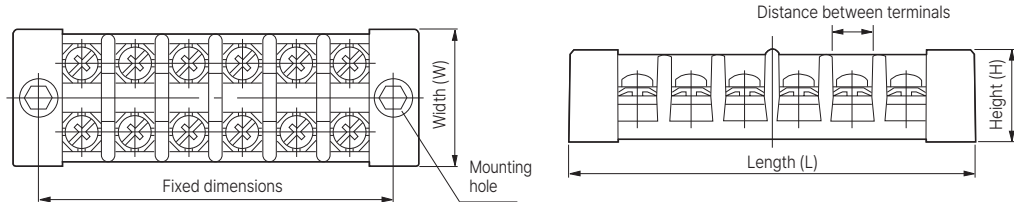
Specifications

| Model | HYT-10□ | HYT-20□ | HYT-30□ | HYT-60□ | HYT-100□ | HYT-150□ | HYT-200□ | HYT-300□ | HYT-400□ | HYT-500□ |
|--------------------------|--|---|--------------------------|----------|----------|--------------------------------|----------|--|----------|----------|
| Rated current | 10 A | 20 A | 30 A | 60 A | 100 A | 150 A | 200 A | 300 A | 400 A | 500 A |
| Terminal screws | M3 | M4 | | M6 | M8 | | M10 | | | M12 |
| Allowable torque | 0.5 N·m | 1.2 N·m | | 3 N·m | 6 N·m | | | 10 N·m | | 14 N·m |
| Mounting hole | ∅3 | ∅4.5 | | ∅5.2 | ∅5.4 | | ∅6.4 | ∅8.4 | | |
| Number of poles | 10 p | 3 p, 4 p, 6 p, 10 p, 12 p, 15 p, 20 p | 3 p, 4 p, 6 p, 10 p | 3 p, 4 p | | | | | | |
| Distance between screws | 9.6 mm | 11.8 mm | 15.5 mm 3010: 13.4 mm | 28 mm | 34.6 mm | 1503: 38.3 mm 1504: 37.5 mm | 45.2 mm | 3003, 4003: 51.5 mm 3004, 4004: 50.3 mm | | 68.9 mm |
| Rated insulation voltage | 600 V | | | | | | | | | |
| Insulation resistance | 100MΩ or higher | | | | | | | | | |
| Dielectric strength | 2,500 V a.c. 1 minute (between charging and non-charging sections) | | | | | | | | | |
| Ambient temperature | -20 to 55 °C | | | | | | | | | |
| Ambient humidity | 45 - 85% RH | | | | | | | | | |
| Certification | RoHS2 | | | | | | | | | |

External dimensions

Model

HYT-10□
HYT-20□
HYT-30□



HYT-60□
HYT-100□
HYT-150□
HYT-200□
HYT-300□
HYT-400□
HYT-500□



[Unit: mm]

| Model | Length (L) | Width (W) | Height (H) | Fixed dimensions |
|----------|------------|-----------|------------|------------------|
| HYT-1010 | 112 mm | 24 mm | 19.8 mm | 102.7 mm |
| HYT-203 | 56 mm | 30 mm | 23.5 mm | 44 mm |
| HYT-204 | 67.8 mm | 30 mm | 23.5 mm | 55.8 mm |
| HYT-206 | 91 mm | 30 mm | 23.5 mm | 79.4 mm |
| HYT-2010 | 138.6 mm | 30 mm | 23.5 mm | 126.5 mm |
| HYT-2015 | 197.6 mm | 30 mm | 23.5 mm | 185.6 mm |
| HYT-2020 | 256.6 mm | 30 mm | 23.5 mm | 244.6 mm |
| HYT-303 | 67 mm | 35 mm | 27.5 mm | 54.2 mm |
| HYT-304 | 82.5 mm | 35 mm | 27.5 mm | 69.7 mm |
| HYT-306 | 113.4 mm | 35 mm | 27.5 mm | 100.6 mm |
| HYT-3010 | 156.7 mm | 35 mm | 27.5 mm | 143.9 mm |

| Model | Length (L) | Width (W) | Height (H) | Fixed dimensions |
|----------|------------|-----------|------------|------------------|
| HYT-603 | 84.5 mm | 40 mm | 33.6 mm | 28 mm |
| HYT-604 | 113.5 mm | 40 mm | 33.6 mm | 56 mm |
| HYT-1003 | 104.5 mm | 55.5 mm | 36.5 mm | 35 mm |
| HYT-1004 | 140 mm | 55.5 mm | 36.5 mm | 70 mm |
| HYT-1503 | 115.5 mm | 67.5 mm | 41 mm | 39 mm |
| HYT-1504 | 153 mm | 67.5 mm | 41 mm | 77 mm |
| HYT-2003 | 134 mm | 72.5 mm | 44.5 mm | 45 mm |
| HYT-2004 | 180 mm | 72.5 mm | 44.5 mm | 90 mm |
| HYT-3003 | 155.5 mm | 83.5 mm | 49.5 mm | 51.8 mm |
| HYT-3004 | 207.5 mm | 83.5 mm | 49.5 mm | 103.6 mm |
| HYT-4003 | 155.5 mm | 83.5 mm | 49.5 mm | 51.8 mm |
| HYT-4004 | 207.5 mm | 83.5 mm | 49.5 mm | 103.6 mm |
| HYT-5003 | 204 mm | 94 mm | 59.5 mm | 68 mm |
| HYT-5004 | 271 mm | 93 mm | 59.5 mm | 136 mm |